

From our Executive Director



Above all else – **thank you for your prayers and financial commitment** to our Family of Families this past year! I am incredibly blessed to connect with many of you in my daily work. Not many people can say that their work allows them to interact with good people with loving intentions each day.

Without all of you, we would not be at this pivotal point in our history – our 50th anniversary. Padre and Madre, our fearless leaders for those harrowing 50 years, will spend this year reminiscing about the good old days. Here in the development office we are looking ahead to the next 50 years and the big fiesta, August 8-10 in Milwaukee, WI at Marquette University.

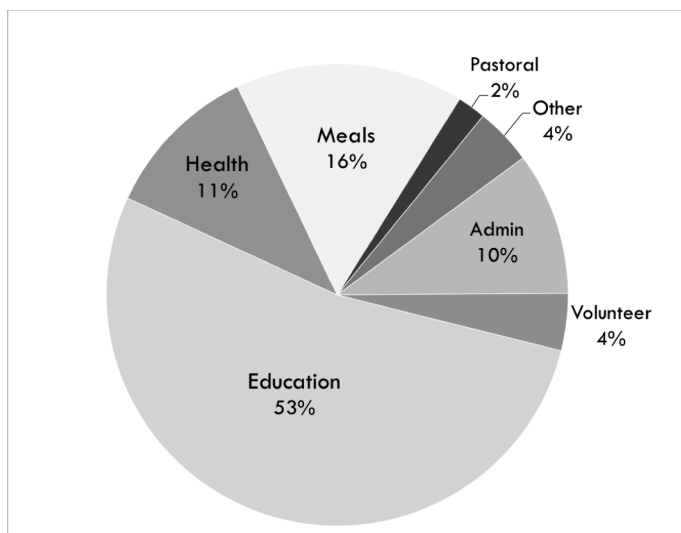
In honor of our 50th anniversary we have prepared this 2013 Annual Report for your review. Our goal is to give you a broad overview of our fundraising success along with an explanation of where your generous donations are directed to support our member families.

In addition, we have legally changed our name from Family Unity International to the **Center for Working Families (C4WF)**. This is where you should write your donation checks to from now on. Thank you!

See you at the 50th in August! – *Patricia Jessup*

2013 Center Expenses

In order to keep the Center running in 2013, we had a budget of \$2.04 million. Here is how it breaks down:



The Impact of Your Gifts

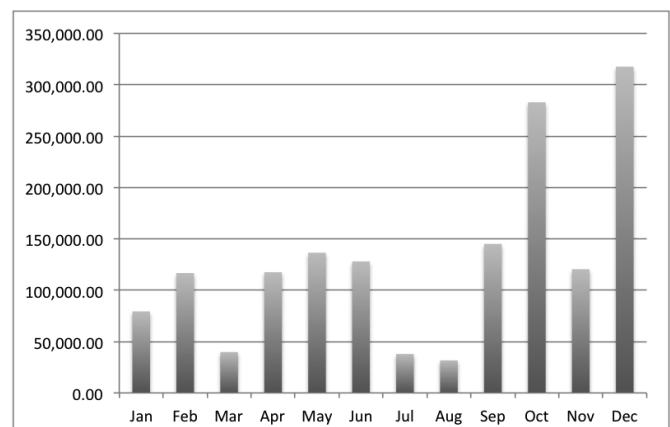
Gifts of all sizes, big and small, combine to fund the many programs we offer to our member families. This year your contributions allowed us to:



1,310,000	Meals served
3,700	Medical visits
1,700	Dental visits
162	Day care children
464	Grammar school students
290	Technical education students
124	Adult education students

Donation Trends

An ongoing struggle we face is the seasonal nature of our donation stream. As you can see in this chart, although our expenses remain steady throughout the year, the bulk of our support comes in at year-end. We would greatly appreciate it if you could spread your giving into a monthly frequency. This would **save us time and money while allowing us to focus on the mission of the Center**. To enter a monthly donation, visit www.c4wf.org and click DONATE NOW!



We had one of our best years ever in calendar year 2013 with over \$1.56 million donated to our Family of Families. God bless you!

The Impact of Our Work

The Center has a proven record of improving families' lives as a result of its exhaustive programs. Check out these statistics that represent the dramatic effects:

- **Home ownership increased** from 21% to 65% for families completing the Center programs
- **Graduate unemployment decreased** to 10% vs. 52% for similar demographic in Quito
- **School drop out rate is lower.** 12% at the Center vs. 32% for similar demographic

Our Stateside Family of Families

Liz, Charlie, Claire and Juliana Sellers are a shining example of the boundless impact the Center has, not only on the poor families it serves, but also, on the young college graduates who volunteer a year or more of their lives on their behalf. The widespread influence on our Family of Families here in the USA is profound and heartwarming. No charts are needed to measure the transformation of the Sellers family and those close to them.

We asked Liz, Charlie, Claire and Juliana (right) to reflect on the ways their lives have been altered as a result of their year long volunteer experience.

Their perspectives on life as a

the subsequent ripple effect on their life afterward provides inspiring insight into the endless ways this 50-year-old Family of Families is a beacon of hope for the entire world, a model to be duplicated.

Liz volunteered from 1998-1999, Charlie from 2001-2003, Claire from 2002-2003 and Juliana recently returned from volunteering 2011-2014. As Juliana says, "I don't think anyone in my amazing volunteer family knew what we were getting ourselves into...when we discussed what commitment meant to us..."

Read their reflections in their entirety on our website at: www.c4wf.org/get-involved/profiles-of-support



2013 Donations Given by Individuals*

Annual Gifts	# of Households	Total Given
0 - \$500	1,108	\$149,062
\$501 - \$2,500	187	\$230,183
\$2,501 - \$10,000	51	\$267,370
\$10,001 - \$25,000	8	\$126,404
\$25,001 +	6	\$334,247

* The remainder of our annual donations is received from various organizations, foundations, universities, etc.

Individual Donor Support

A majority of our individual donors fall into the \$500 and under level. Our hope is to inspire all individuals to dig down deep and increase their financial support in any way possible. The ripple effect of your increase in contributions will be priceless to our Family of Families!



Big Happenings This Year

This year has been a fantastic year for the Center on many fronts. We are proud to share the following:

- Purchased new 48 person bus for \$120,000
- Over 400 short term visitors served our families
- Volunteers and staff ran in the LUV-RUN fundraiser
- Our child rep participated in an international meeting in Peru on the topic of working children
- Our daycare kids won first place in singing contest
- Father General of the Jesuits met with our kids
- We now have an official choir

¡Muchas Gracias!



For the important role you play in enabling our Center staff and dedicated year long volunteers to transform families from poverty to prosperity! You are making a BIG difference in many lives!